



**STEEL
TIMBALE SET
ASSEMBLY MANUAL**
BTB1413L



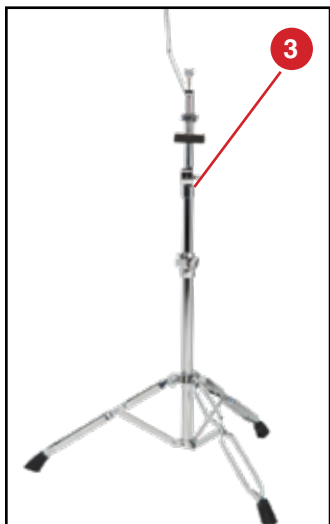
TIMBALE SET PARTS

13" Timbale
14" Timbale
Timbale Stand
Cowbell
Accessory arm
Top Collar
2 Stabilizer Bars
Drum Key
Timbale Sticks
Washer
Wing Nut

ASSEMBLY STEPS

STAND ASSEMBLY

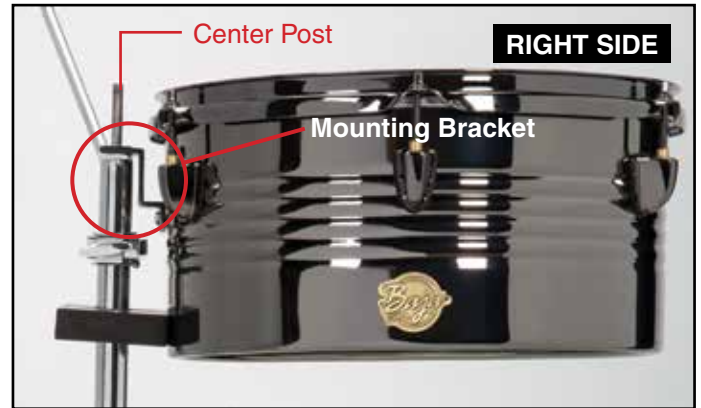
1. Loosen wing nut and pull out legs to full extension
2. Insert top of stand into bottom assembly.
3. Loosen wing nut and extend tilter to be straight up



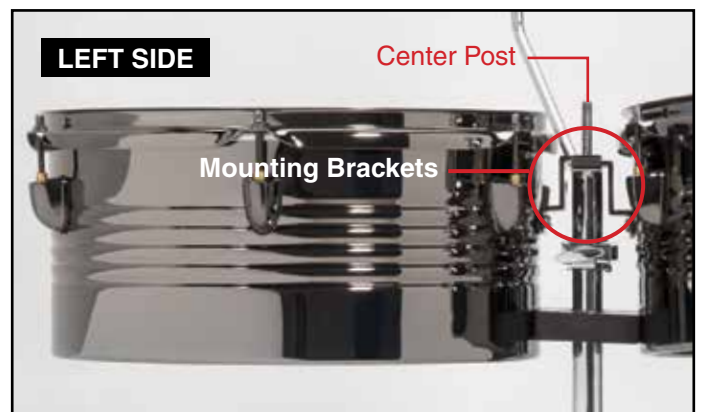
PLACING DRUMS ON STAND

Our stabilization system will allow you to pick the drums up by the shells. If you're moving the drums, grasp by the stand for additional stability. When transporting the timbales it is always best to disassemble the drums from the stand.

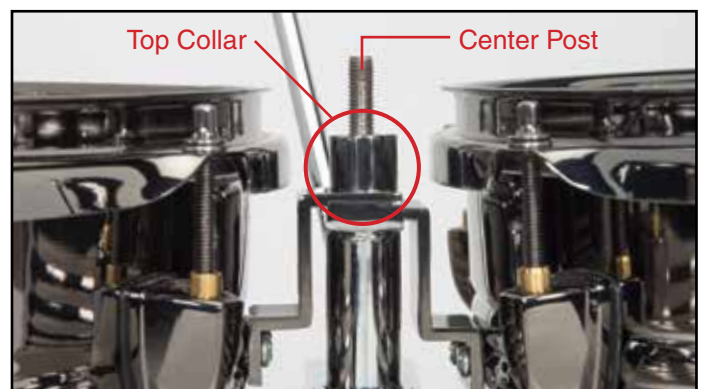
4. Place 13" Timbale on center post by slipping the mounting bracket over the post. The 13" timbale traditionally faces to your right.



5. Place 14" Timbale on center post facing to your left.



6. Place top collar over the center post.



7. Position first stabilizer bar and slip the lip of the bar under the curve of the 13" timbale rim on your right.
8. Place second stabilizer on top of the first one and repeat steps with the 14" timbale on your left.



9. Place washer and wing nut onto center post and tighten. Once tightened the drums will lock into place and provide a stable frame.



ASSEMBLING AUXILLARY ACCESSORY ARM AND MOUNTING COWBELL

10. On the stand you will find the accessory arm.
11. Slip cowbell on the accessory arm. Tighten attached cowbell wing nut for a secure fit. The cowbell opening should be facing your right side.



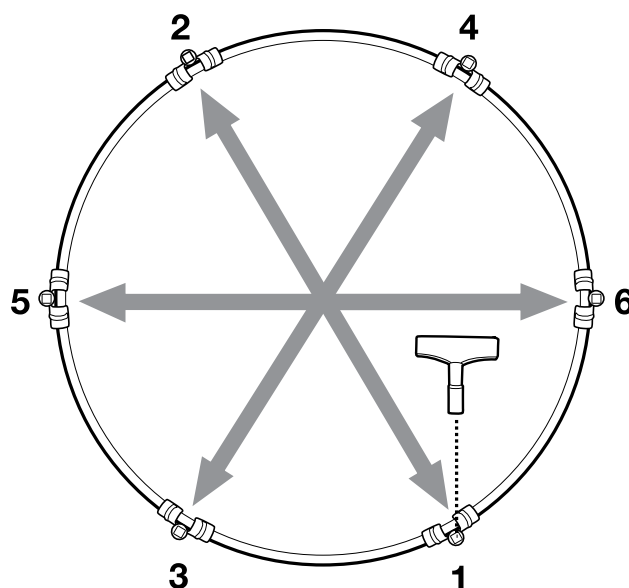
ADJUSTING HEIGHT AND ANGLE

1. The usual height for the drums should be about waist high of the player.
2. Most Timbales are played relatively flat with no angle. But you do have the ability to change the angle by positioning the tilter at the upper section of the stand. This is especially handy if placing within a drum set or when playing multiple percussion instruments.

TUNING

1. Loosen each tension rod of both timbales with drum key, then finger tighten.
2. Now, take the drum tuning key and tighten each tension rod a quarter turn in a crisscross pattern using the sequence indicated in the diagram below.

Tension Rod Tightening Sequence



3. While tensioning use your finger and tap the timbale head at each lug point about 2" in from the rim.

The goal here is to listen to the overtones produced and bring each point in tune with the others. A clear tone at desired pitch is what you want to get to. Apply small quarter turns of the drum key and use listening to get a natural even tone. Again use the crisscross pattern to maintain equal tensioning. Take your time.

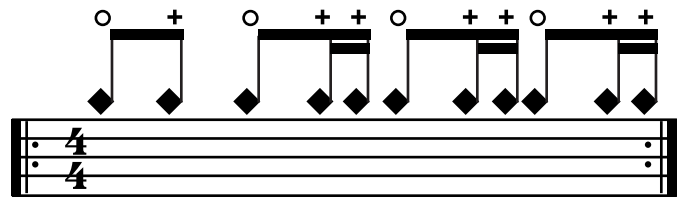
MOVING THE TIMBALES AFTER ASSEMBLY

When moving the Timbales, use the center stand for better stability.

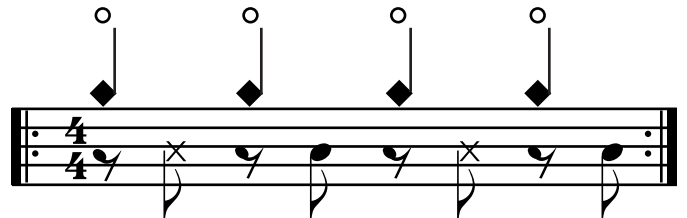


SUGGESTED RHYTHM FOR TIMBALE

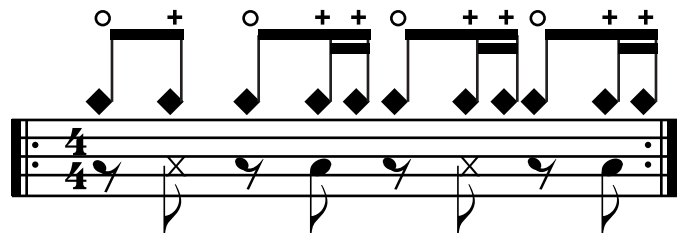
Cowbell Pattern




Add low drum and start with bell on beat





Basic Pattern, start slowly and increase your speed




MUSICAL NOTATION

 Strike **mouth** of bell

 Strike **neck** of bell

 **Rim click** - strike the center of head with the palm of your hand while the timbale stick extends over the rim, producing a muffled head sound and a rim click sound at the same time

 **Open sound** - strike the center of the head with the timbale stick